



Home Haircutting *Made Simple*

Home Haircutting in 4 Easy Steps

1. Cutting
2. Blending
3. Tapering
4. Finishling Touches



For personal attention from one of our
customer service representatives,
please contact us at

www.wahlhomeproducts.com/contact

1-800-334-4627

Cutting Hair . . . Getting Started

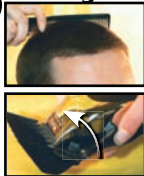
1st Time Cutting Hair

The first time you cut hair, cut only a small amount of hair until you become accustomed to the length of hair each guide comb provides. (See guide comb listing on page 4.)

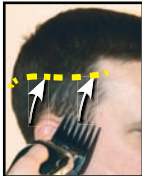
- Start by attaching the largest guide comb on the clipper.
- Then use shorter guide combs if a shorter length is desired.
- For uniform cutting, cut at a slow, even speed.

Get how-to videos, downloadable instructions and more at www.wahlkeepitclean.com

1 Cutting



Get ready for cutting by combing hair. Then attach the largest guide comb and make sure the taper level is in the up position.



Begin cutting at the hairline. Using upward strokes, cut towards the middle of the head. NOTE: If hair is longer than wanted, repeat this step with one size smaller guide comb.



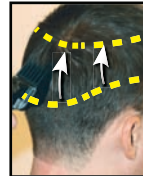
Continue around the head using upward strokes.



Now you're ready to cut the middle section of hair.



Pick a guide comb one number higher than what you used for cutting the hairline.



Using upward strokes, cut the middle section around the head.



Pick a guide comb one number higher than what you used for cutting the middle portion of the hair. Begin cutting from the front.

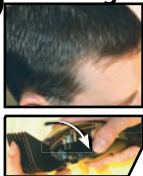
2 Blending



Using long strokes, cut across top of head.



Comb out hair to see if you need to do any extra cutting.



Smoothing lines formed from cutting is easy. Use the same guide comb from cutting the hairline with taper level in down position.



Use a rocking motion to blend out middle.

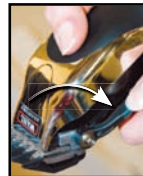


Use the same guide comb from cutting top of head and blend top cutline.

3 Tapering



Ear guide combs have a taper built right in. Length ranges from 1/8" to 1/2".



Attach left ear guide comb to your clipper. Put taper level in down position.



Hold top of the ear down. Hold clipper at a slight angle. You will begin cutting just behind ear at the hairline.



Cut around the ear in an upward and then outward motion.

Cutting Hair . . . Getting Started

Finishing Touches

4 Necklines and Sideburns



No attachments needed. Push the taper lever up to the close cut position.



Start by cleaning up sideburns.



Continue around each ear as shown.



Clean up the neckline as shown.

Around Ears



Put ear trim guide on your clipper.



Hold your clipper at about 45-degree angle. Trim slowly, moving the clipper from back to front.

Eyebrows



Put brown trim guide on your clipper.



Begin just above your nose and slowly trim towards the outside of your face.

NOTE: Get a closer brow trim by working from the outside of your face to your nose.

1st Time Cutting Hair

The first time you cut hair, cut only a small amount of hair until you become accustomed to the length of hair each guide comb provides. (See guide comb listing on page 4.)

- Start by attaching the largest guide comb on the clipper.
- Then use shorter guide combs if a shorter length is desired.
- For uniform cutting, cut at a slow, even speed.

Get how-to videos, downloadable instructions and more at

www.wahlgreathaircuts.com



